

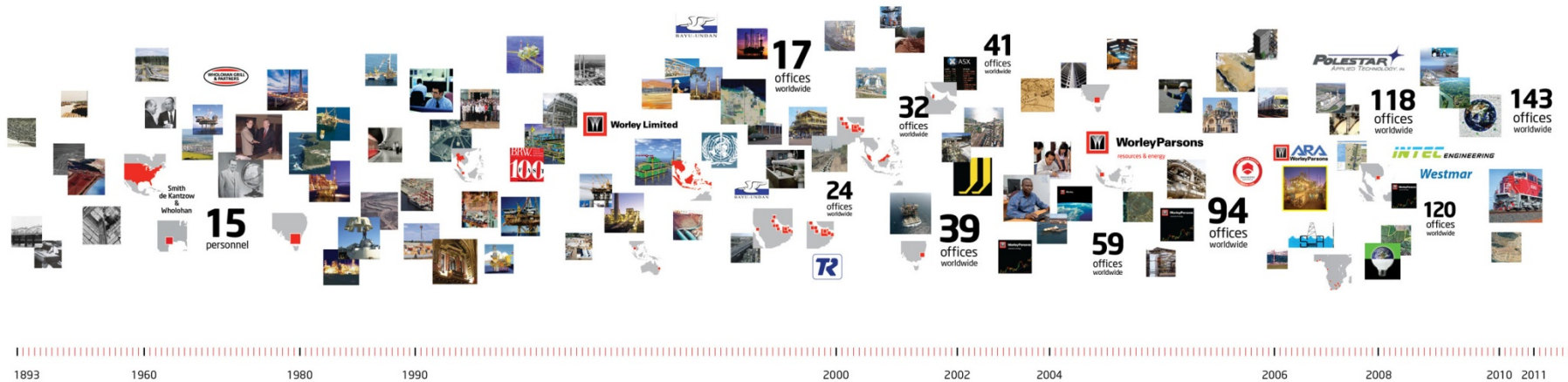


**WorleyParsons**

resources & energy

**1500** years combined company history

# Credit Lyonnais Securities Asia Presentation





**WorleyParsons**  
resources & energy

# Global Reach, Local Operations



**35,100 people 143 offices 43 countries**



**WorleyParsons**

resources & energy

# Market Polarity

## DEVELOPED WORLD

AUSTRALIA CANADA HONG KONG NETHERLANDS NEW ZEALAND  
SINGAPORE SPAIN UNITED KINGDOM UNITED STATES

- ▶ Efficiency and optimisation of assets
- ▶ Sustainable solutions
- ▶ Smarter technology
- ▶ Global leverage



- ▶ Monetising resource asset base
- ▶ Desire for energy sovereignty
- ▶ Development of sustainable resource and energy solutions
- ▶ Major infrastructure investment

## EMERGING WORLD

ANGOLA BAHRAIN BRAZIL BULGARIA CHILE CHINA COLOMBIA EGYPT  
GHANA INDONESIA INDIA IRAQ JAMAICA KAZAKHSTAN KUWAIT  
MALAYSIA MONGOLIA NAMIBIA NIGERIA OMAN PERU QATAR RUSSIA  
SAUDI ARABIA SOUTH AFRICA THAILAND TIMOR-LESTE TRINIDAD UAE  
VENEZUELA VIETNAM



- ▶ **Difficult Oil**
  - Arctic & remote
- ▶ **LNG**
  - Greenfield, floating, regas
- ▶ **Unconventional gas**
  - Coal seam and shale gas
- ▶ **Brazil**
- ▶ **Sustaining capital services**



**WorleyParsons**

resources & energy

# Power

- 
- An aerial photograph of a large industrial power plant. Several tall, cylindrical smokestacks with red and white horizontal stripes are prominent. The plant itself is a complex of various structures, including buildings and piping. In the background, a large body of water, possibly a reservoir or lake, stretches across the horizon under a clear sky. The foreground shows some greenery and a road.
- ▶ **Developed world**
    - Reduced energy consumption
    - Smart Grids
  - ▶ **New build nuclear**
  - ▶ **Sustaining capital services in fossil power**
  - ▶ **Carbon sequestration & storage**



**WorleyParsons**

resources & energy

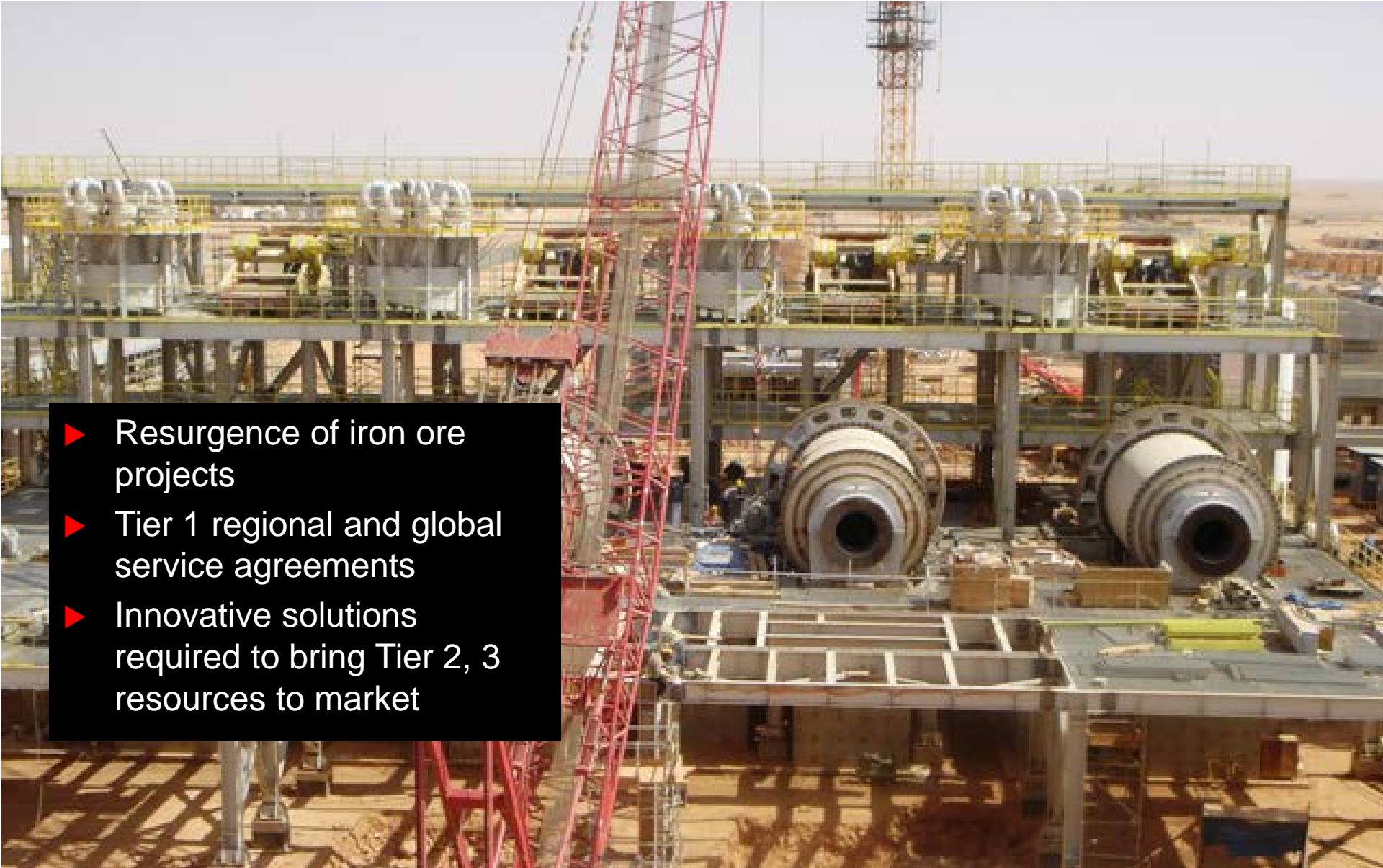
# Infrastructure



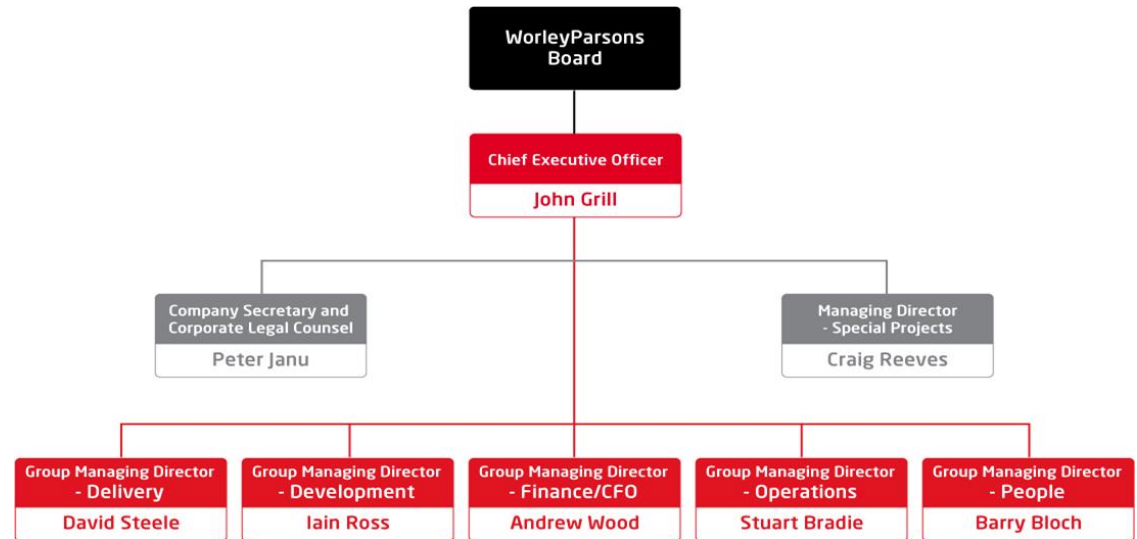
- ▶ Resource infrastructure
  - Pit to port
  - LNG plants
  - Water infrastructure
- ▶ Master planning for developing economies
  - Rail, port, water, environment



- ▶ Resurgence of iron ore projects
- ▶ Tier 1 regional and global service agreements
- ▶ Innovative solutions required to bring Tier 2, 3 resources to market



- ▶ Organisation restructure to enable the business to be closer and more responsive to customers



- ▶ Building capability in Emerging World
  - Mongolia, Ghana, Namibia, Peru, Colombia
  - Acquired Kv3 in South Africa – now over **2,000** personnel in SSA
  - Increased ownership in China

- ▶ Continue to build capacity in offshore oil and gas market
- ▶ Execution of LNG in Australia is a primary focus
- ▶ Respond to the extensive demand in Canada for the heavy oil/oil sands market
- ▶ Work closely with the national oil companies to deliver a broad range of services





**WorleyParsons**

resources & energy

# Power Strategy



- ▶ Follow growth in Asia, Middle East, Latin America and Africa.
- ▶ Focus on asset optimisation and network integration in developed economies
- ▶ Continue to lead energy storage and carbon capture & sequestration markets
- ▶ Extend leadership in new build nuclear



# Infrastructure Strategy



- ▶ Focused on infrastructure and environmental needs for
  - Pit to port
  - Water management
  - Ports of the future
  - Master planning
  - Remediation and decommissioning of facilities



# Minerals & Metals Strategy

- ▶ Continue expansion in South America & Africa
- ▶ Further embed unique pit to port infrastructure solutions for stranded resources
- ▶ Broaden service offering in global agreement contracts



Commenting on the outlook for the WorleyParsons Group, Mr John Grill said:

“The group result improved through the second half of 2011 and, subject to the markets for our services remaining strong, we expect to achieve good growth in 2012 compared to 2011 underlying earnings.

“The group continues to evaluate opportunities for new business growth that will add to its existing capabilities and provide value for our shareholders.

“The group is confident that its medium term and long term prospects remain positive based on its competitive position, its diversified operations and strong financial capacity.”



**WorleyParsons**

resources & energy

**1500** years combined company history

# Credit Lyonnais Securities Asia Q&A

